

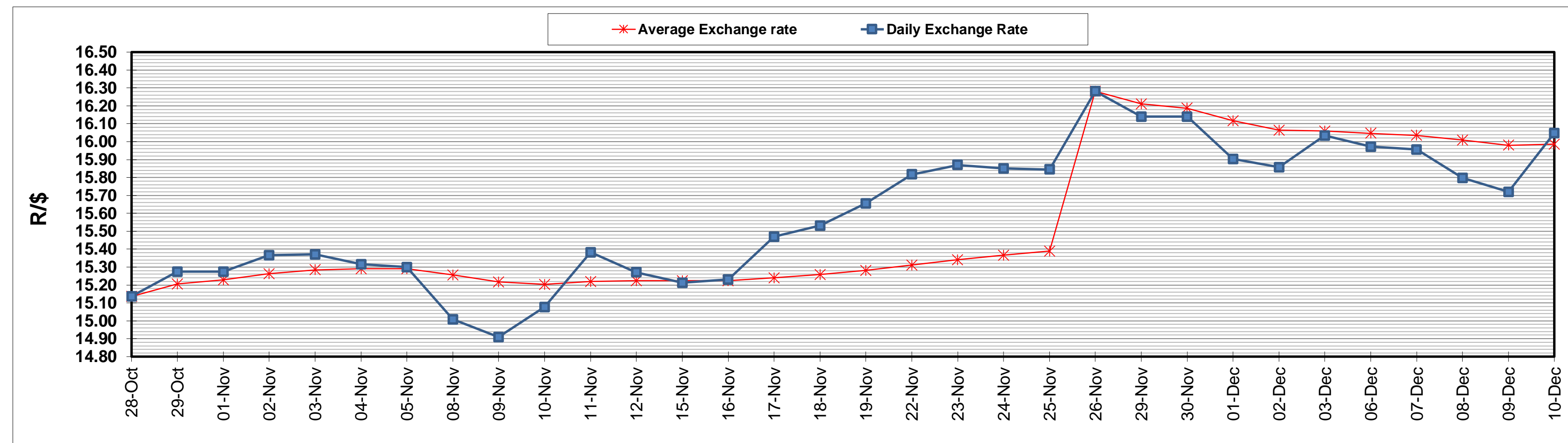
	PETROL 95 ULP	PETROL 93 ULP & LRP	DIESEL 0.05%	DIESEL 0.005%	ILL. PAR.
GAUTENG PUMP PRICE (SA c/l) AS FROM 01/12/2021	2,029.000	2,007.000	-	-	-
WHOLESALE PRICE (SA c/l) AS FROM 01/12/2021	-	-	1,792.480	1,797.880	1,167.688
SINGLE NATIONAL MAXIMUM RETAIL PRICE	-	-	-	-	1,489.000
BASIC FUEL PRICE - 10/12/2021 (SA c/l)	918.528	900.975	894.352	897.151	884.762
PRESS RELEASE CONTRIBUTION TO BFP 01/12/2021 - 10/12/2021 (SA c/l)	973.670	961.670	955.630	961.030	946.128
UNIT OVER/(UNDER) RECOVERY - 10/12/2021 (SA c/l)	55.142	60.695	61.278	63.879	61.366
AVERAGE BASIC FUEL PRICE 26/11/2021 - 10/12/2021	878.252	862.136	865.895	870.460	857.955
AVERAGE UNIT OVER/(UNDER) RECOVERY 26/11/2021 - 10/12/2021	85.447	89.562	79.372	79.661	78.901

ANALYSIS MOVEMENT OF AVERAGE OVER/(UNDER) RECOVERY

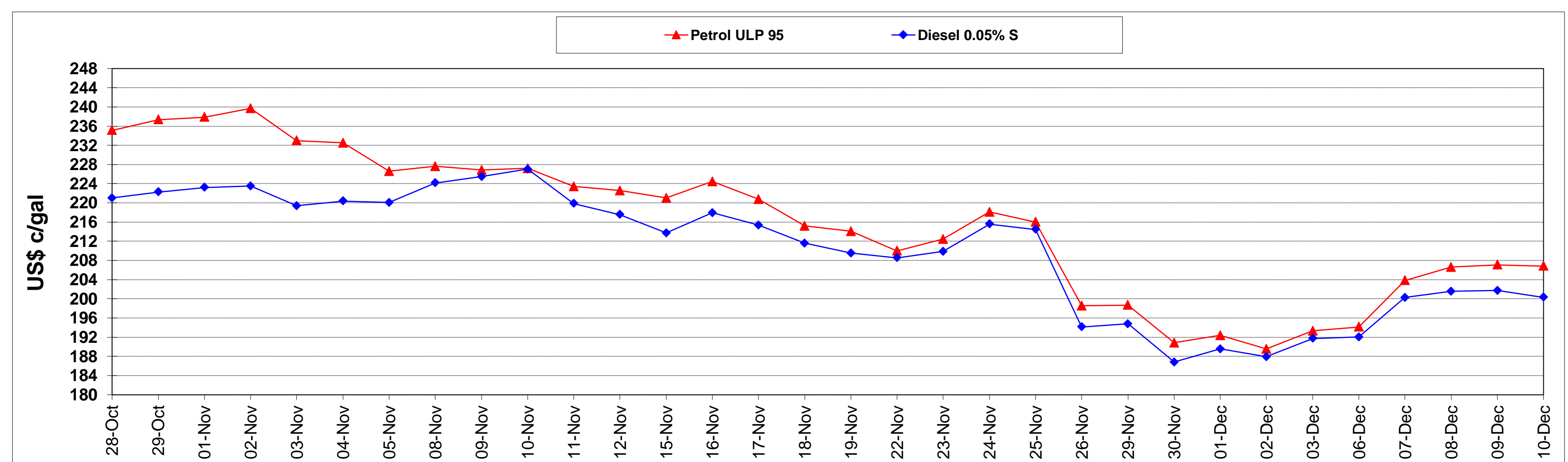
	PETROL 95	PETROL 93	DIESEL 0.05%	DIESEL 0.005%	ILL. PAR.
- MOVEMENT IN INTERNATIONAL PRODUCT PRICES	118.266	121.780	111.729	112.189	110.961
- MOVEMENT IN EXCHANGE RATE	(32.819)	(32.217)	(32.358)	(32.528)	(32.061)
AVERAGE UNIT OVER/(UNDER) RECOVERY 26/11/2021 - 10/12/2021	85.447	89.562	79.372	79.661	78.901

R/\$ EXCHANGE RATE - (R/\$16.0475 - 10/12/2021)

EXCHANGE RATE USED IN BASIC FUEL PRICE



INTERNATIONAL PRODUCT PRICES OF BASKET USED IN BASIC FUEL PRICE



BASIC FUEL PRICE IN SA CENTS PER LITRE

